

Eufonio 2

SINFONIA

Durata circa 6'27"
Grado 5.0

Amilcare Ponchielli (1834-1886) Op. 106
Versione per banda sinfonica di Emiliano Gusperti

Andante un poco mosso (♩ = 70)

Cr. 4

ff *pp*

9 *pp* *pp* *f* *pp*

13

15

18 Allegro vivo (♩ = 132)

1 *ff*

deciso assai

24

29

33 3 34-36 *f*

39 7 42-48

49



54



59



66



72



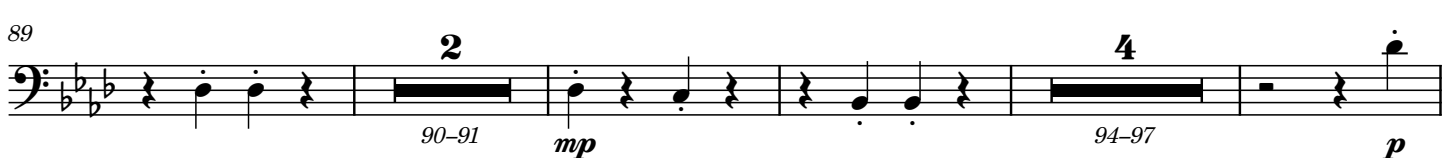
77



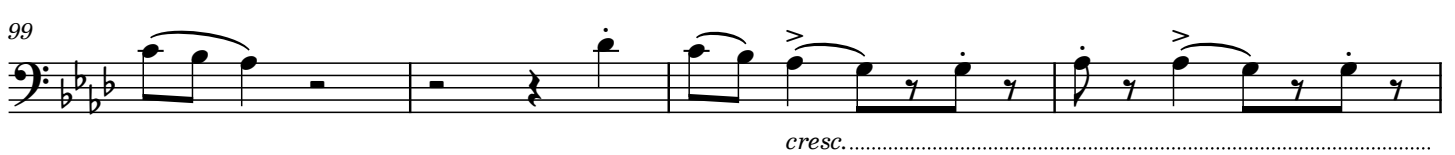
82



89



99



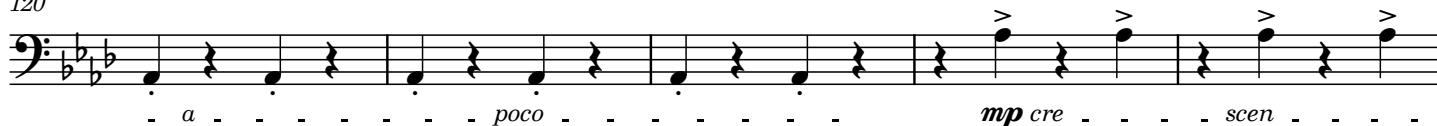
103



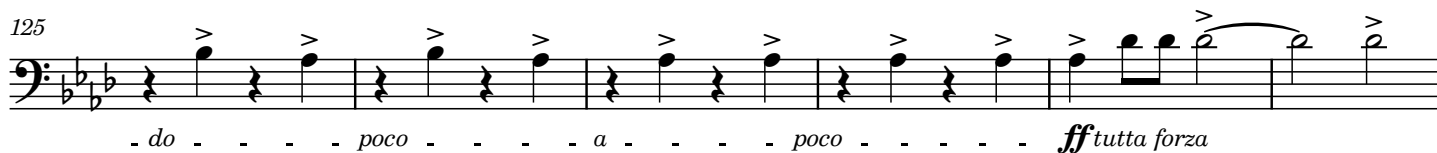
115



120



125



131



137



143



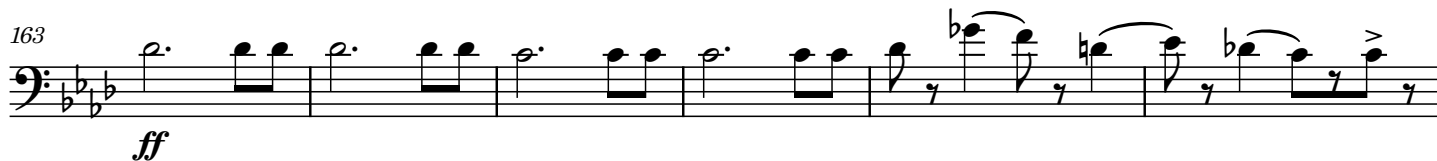
150



157



163



169



174

11

176-186

p cresc......

189

194

ff

199

203

207

211

215

219

3

220-222

f

225

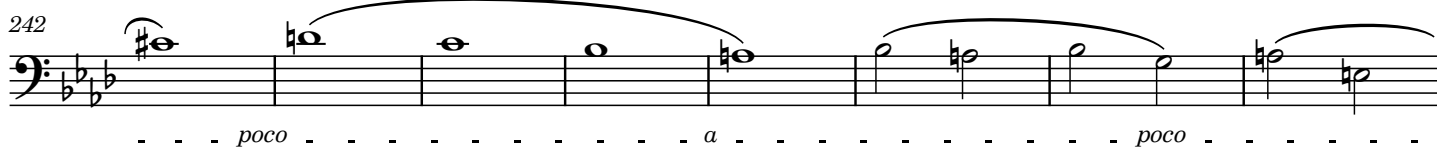
7

228-234

235



242



250



Maggiore

255



263



268



273



279



284



289



294



299

ff

306

312

316-318

p cresc.

320

The musical score for the bass line of 'The Rose Tree' is written on a single staff in bass clef. The key signature has two flats (B-flat and E-flat). The melody begins with a half note B-flat, followed by a half note E-flat, and then a half note D. A slur covers the first three notes. The next measure contains a half note D, followed by a half note C, and then a half note B. The following measure has a half note B, followed by a half note A, and then a half note G. The next measure contains a half note G, followed by a half note F, and then a half note E. The final measure has a half note E, followed by a half note D, and then a half note C. The piece concludes with a double bar line. The dynamic marking *ff* is placed below the staff at the end of the piece.

326

326

327

328

329

330

331

ff

332

332

337



337

341

Example 10

345

Measures 345-350 of the piece. The notation continues with a series of eighth and sixteenth notes, including a triplet of eighth notes in measure 348. The key signature remains one flat (B-flat), and the time signature is 4/4. The melody concludes with a final note in measure 350.

351

351

356

This block contains measures 356 through 361 of the musical score. Measure 356 is a bass line starting with a half note G2, followed by quarter notes F2, E2, and D2. Measure 357 has a half note D2, a quarter note C2, and a half rest. Measure 358 has a half note B1, a quarter note A1, and a half rest. Measure 359 has a half note G1, a quarter note F1, and a half rest. Measure 360 has a half note E1, a quarter note D1, and a half rest. Measure 361 is a whole note D1. The piano accompaniment in this section consists of a steady eighth-note pattern in the right hand, primarily on G4 and A4, with occasional chromatic movement and grace notes.